



The FAST M350z.

LONG-RANGE INFRARED CAMERAS.

The FAST-TrackIR series combines the characteristics of our renown FAST-IR infrared cameras with impressive ranging capabilities. These cameras have an integrated motorized continuous zoom lens with autofocus and a focal length of up to 660 mm. They are extremely sensitive, and thus enable the detection of challenging targets.

KEY BENEFITS

HIGH FRAME RATE

High performance electronics produce thermal images at rates of up to 355 fps. Sub-windows can even be acquired at rates higher than 4 980 fps, depending on the model.

HIGH-SPEED INTERNAL MEMORY

1 GB internal memory procures reliable recording. An optional upgrade up to 32 GB will provide even more autonomy.

HIGH SENSITIVITY

Temperature differences as small as 20 mK are detectable.

ADVANCED CALIBRATION

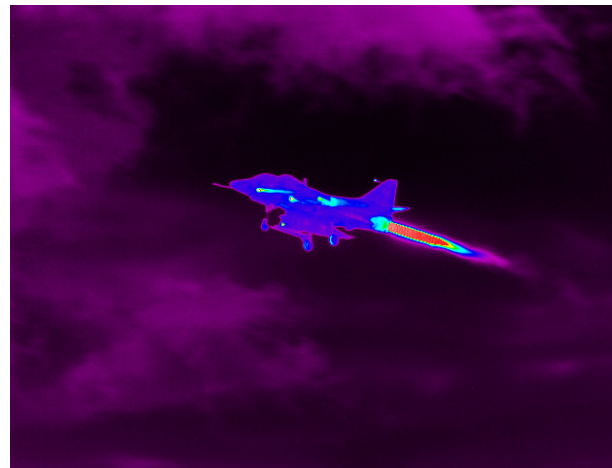
Unique proprietary real-time processing of infrared images including NUC, radiometric temperature, automated exposure control (AEC) and enhanced high-dynamic-range imaging (EHDRI). With these unique features, scientists benefit from ease of use and operation flexibility while getting accurate measurements over the entire camera's operation range.

EXAMPLES OF TYPICAL USES

Surveillance



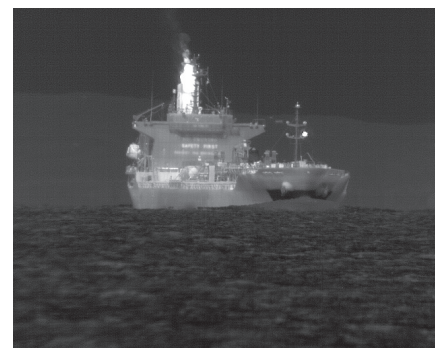
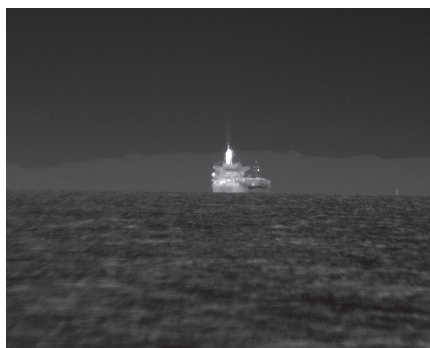
Target ranging



FAST-TrackIR Series.		
SPECIFICATIONS	FAST M350z	FAST M351z
DETECTOR TYPE	Cooled InSb	
SPECTRAL RANGE	3.6 μm to 4.9 μm (opt.: 3 μm to 5.4 μm)	
SPATIAL RESOLUTION	640 \times 512 pixels	
DETECTOR PITCH	15 μm	
OPTICAL APERTURE	F/4	
FILTER WHEEL	No	Standard 4-position
MAXIMUM FRAME RATE (FULL WINDOW)	355 Hz	
MAXIMUM FRAME RATE (SUBWINDOW)	672 Hz @ 320 \times 256 4 980 Hz @ 132 \times 4	
TYPICAL NETD	25 mK	
NFOV	0.83° \times 0.66°	
WFOV	18.2° \times 14.6°	
MIN. EXPOSURE TIME	0.5 μs to full frame rate	
LENS MOUNT	Bayonet interface	

Specifications are subject to change without notice. Other configurations are available upon request.

OTHER SPECS & FEATURES	
Rotary-stirling closed cycle sensor cooling	Gig-E
Blackbody-free permanent calibration (up to 150 °C)	Camera Link
16 bits dynamic range	Trigger In, Trigger Out
High-speed internal memory buffer: up to 32 GB (optional)	SDI, GPS, IRIG-B, RS232 and thermistor ports
Automatic exposure control (AEC)	Weight: 13.2 kg (for M350z/M200z)
Enhanced high-dynamic-range imaging (EHDMI)	Size: 20.4" \times 8.9" \times 7.9" 520 mm \times 225 mm \times 200 mm



Cargo ship (size 145 m \times 24 m) 6 km from the shore

FOR MORE INFORMATION | TELOPS.COM

TELOPS HEADQUARTERS
contact@telops.com
 Tel.: +1 (418) 864-7808

TELOPS USA
vince.morton@telops.com
 Tel.: +1 (831) 419-7507

TELOPS EUROPE
eric.guyot@telops.com
 Tel.: +33 1 70 27 71 34

TELOPS CHINA
vincent.farley@telops.com
 Tel.: +1 (418) 264-7805