



The IP-67 certified enclosure.

SCIENTIFIC THERMAL INFRARED CAMERA.

The L200 is a cooled, high-performance scientific thermal infrared camera designed to provide excellent image quality and impressive thermal sensitivity. It features our unique real-time calibration and is an excellent choice for a variety of scientific and industrial applications.

KEY BENEFITS

HIGH FRAME RATE

Maximum data throughput is larger than 1 Gigabit/s. High performance electronics produce thermal images at rates of up to 234 fps in full-frame mode. Sub-windows can be acquired at rates up to 17 200 fps.

HIGH-SPEED INTERNAL MEMORY

1 GB (expandable) memory for autonomous operation.

HIGH SENSITIVITY

Temperature differences as small as 22 mK are detectable.

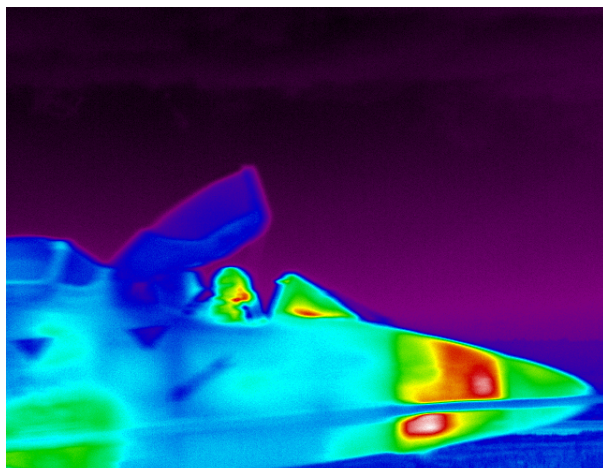
ADVANCED CALIBRATION

Unique proprietary real-time processing of infrared images including NUC, radiometric temperature, automated exposure control (AEC) and enhanced high-dynamic-range imaging (EHDRI).

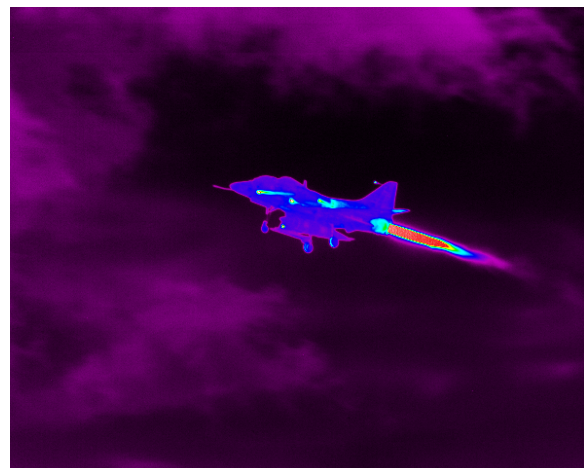
With these unique features, scientists benefit from ease of use and operation flexibility while getting accurate measurements over the entire camera's operation range.

EXAMPLES OF TYPICAL USES

IR signature



Target ranging



FAST L200	
SPECIFICATIONS	L200
DETECTOR TYPE	Cooled MCT
SPECTRAL RANGE	7.7 μ m to 9.3 μ m
SPATIAL RESOLUTION	640 × 512 pixels
DETECTOR PITCH	15 μ m
APERTURE SIZE	F/2
FRAME RATE	234 Hz
MAXIMUM FRAME RATE	800 Hz @ 320 x 256 17 200 Hz @ 160 x 2
TYPICAL NETD	22 mK
EXPOSURE TIME	0.2 μ s to full frame rate
LENS MOUNT	Threaded interface



Jet engine IR signature measurement



Helicopter IR signature characterization

OTHER SPECS & FEATURES	
Rotary-stirling closed cycle sensor cooling	Gig-E
Blackbody-free permanent calibration (up to 150 °C)	Camera Link
Calibration up to 2 500 °C (optional)	Trigger In, Trigger Out
16 bits dynamic range	SDI, GPS, IRIG-B, RS232 and thermistor ports
High-speed internal memory buffer: up to 32 GB	Lock-In (optional)
Automatic exposure control (AEC)	Weight: < 6 kg
Enhanced high-dynamic-range imaging (EHDR)	Size w/o lens: 12.6" × 7.8" × 6.9" 321 mm × 199 mm × 176 mm

FOR MORE INFORMATION | [TELOPS.COM](https://telops.com)

TELOPS HEADQUARTERS
contact@telops.com
Tel.: +1 (418) 864-7808

TELOPS USA
vince.morton@telops.com
Tel.: +1 (831) 419-7507

TELOPS FRANCE
eric.guyot@telops.com
Tel.: +33 1 70 27 71 34

TELOPS CHINA
zhaoyongg@vip.sina.com
Tel.: +86 13801185178